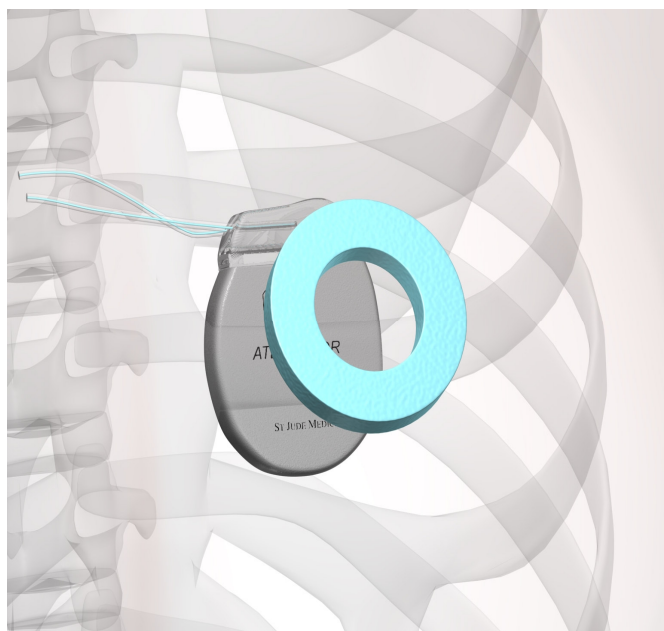


Guidance on Acute Management of Implantable Cardioverter Defibrillators (ICD's) in the community setting

The algorithm overleaf is to provide guidance to community teams in the acute management of patients who are presenting acutely unwell with an arrhythmia and have an ICD in situ.

The diagram below demonstrates the placement of the ring magnet on the patient's chest to enable emergency deactivation of the defibrillator, if required.

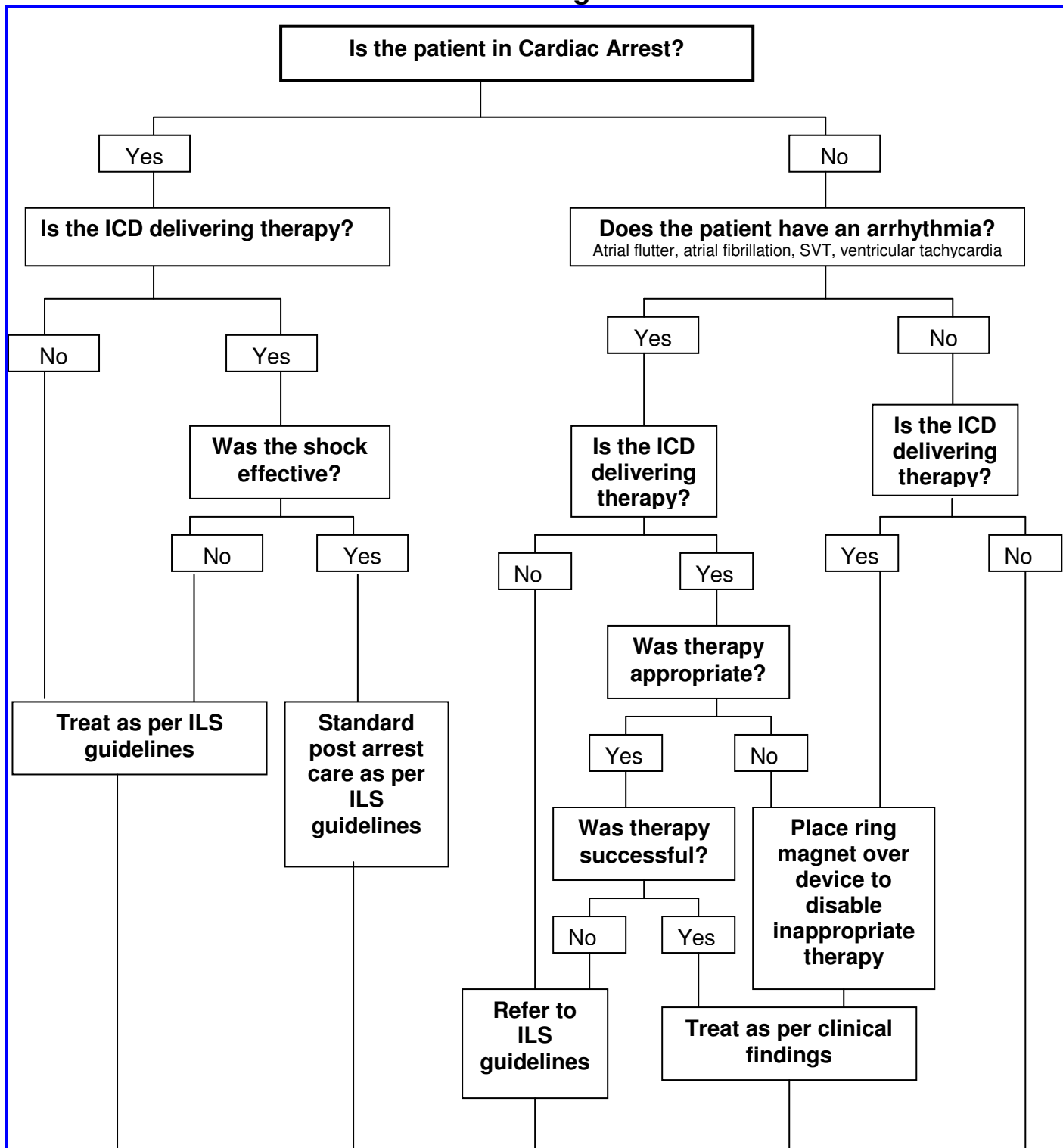


Ring magnets can be found in all community hospitals and emergency care facilities within northern NHS Highland. If a magnet is required – please contact Cardio Respiratory Department on 01463 704249 for further assistance.

North and West Operational Unit	South and Mid Operational Unit
<ul style="list-style-type: none">• Caithness General Hospital, Wick• Town & County, Wick• Dunbar Community Hospital, Thurso• Lawson Memorial Hospital, Golspie• Migdale Hospital, Bonar Bridge• Portree Hospital• Mackinnon Memorial Hospital, Broadford• Belford Hospital, Fort William	<ul style="list-style-type: none">• Raigmore Hospital, Inverness• Royal Northern Infirmary, Inverness• Highland Hospice, Inverness• Town and County Hospital, Nairn• Aviemore Health Centre• Ian Charles Hospital, Grantown on Spey• County Community Hospital, Invergordon• Ross Memorial, Dingwall

Warning – Document uncontrolled when printed	
Policy Reference: Guidance on acute management of ICD's	Date of Issue: November 2012
Prepared by: Amanda Smith and Catriona MacDonald	Date of Review: November 2014
Lead Reviewer: Dr Stephen Cross	Version: 1
Authorised by: Resuscitation Committee	Page 1 of 2

Guidance on Acute Management of ICD's



Contact local ICD Centre for further help and assistance

NB: It is safe to touch a patient when the ICD is delivery therapy

Additional Support available from:

Office hours: Cardio Respiratory Department, Raigmore Hospital, Inverness
Tel: 01463 704249

Out of Hours: Coronary Care Unit, Raigmore Hospital, Inverness
Tel: 01463 705849

If further support required, the telemed ECG service is available through the
Coronary Care Unit, Raigmore Hospital, Inverness